

A white silhouette of the continent of Australia is centered on the left side of the page. A dark blue silhouette of a kangaroo is positioned in the center of the continent, facing left. The kangaroo's tail extends towards the bottom right of the continent's outline.

# DESTINATION AUSTRALIA

## General Presentation

[www.swisimmigration.com](http://www.swisimmigration.com)

Version – January 2020

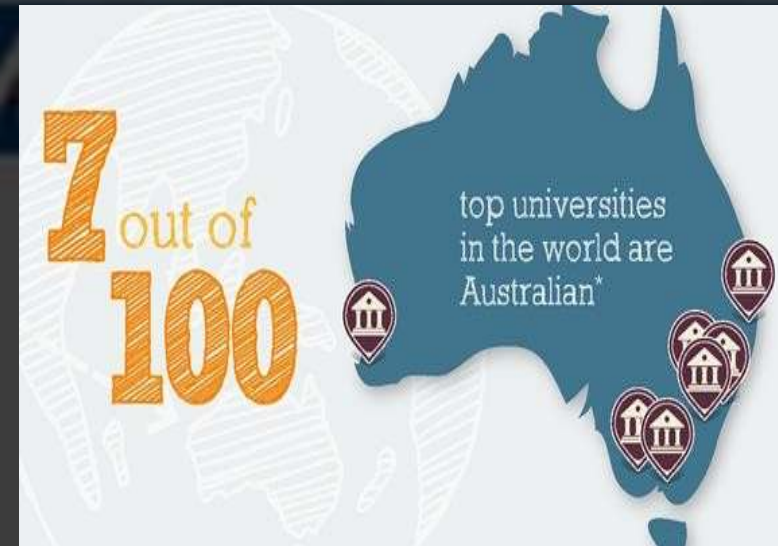


# MAP OF AUSTRALIA



# WHY AUSTRALIA

- International Rankings of Australian Universities
- Part time job opportunities for international students
- Post-Study Work Visa up to 4 years
- Opportunity for Permanent Residence
- IELTS, TOEFL and PTE scores are accepted by all universities
- Availability of pathway programs for international students





# WHY AUSTRALIA

- **No application fee in a majority of universities**
- **Flexibility in terms of deadlines, universities ready to accept applications and financials closer to course start dates**
- **Lower entry requirements of universities with relatively higher international rankings**
- **No Visa interviews**
- **Quick visa outcomes\***
- **GST is paid over and above commissions**

# POPULAR CITIES IN AUSTRALIA



**Sydney**



**Brisbane**



**Melbourne**



**Adelaide**



**Perth**



**INTAKES  
AVAILABLE  
WITH  
AUSTRALIAN  
UNIVERSITIES**

- **Major Intakes**
  - **February and July**
  - **Offered by Universities and Private Colleges**
  - **Courses offered: All popular areas**
- **Minor Intake**
  - **October/November**
  - **Offered by Private Colleges and some of the major universities (e.g. Deakin University and Griffith University)**
  - **Courses offered: Business, Information Technology and Engineering**

# TYPES OF EDUCATIONAL INSTITUTIONS IN AUSTRALIA



Private Colleges



Universities



TAFEs





# PRIVATE COLLEGES IN AUSTRALIA

- **Colleges offering Bachelor's and Master's programs**
- **Independent Colleges offer Bachelor's & Master's Degrees**
- **e.g. International College of Management, Sydney**
- **Some colleges are affiliated with universities (offer UG & PG programs)**
- **e.g. Australian Technical and Management College affiliated with Federation University**
- **These colleges offer Information Technology and Business programs**





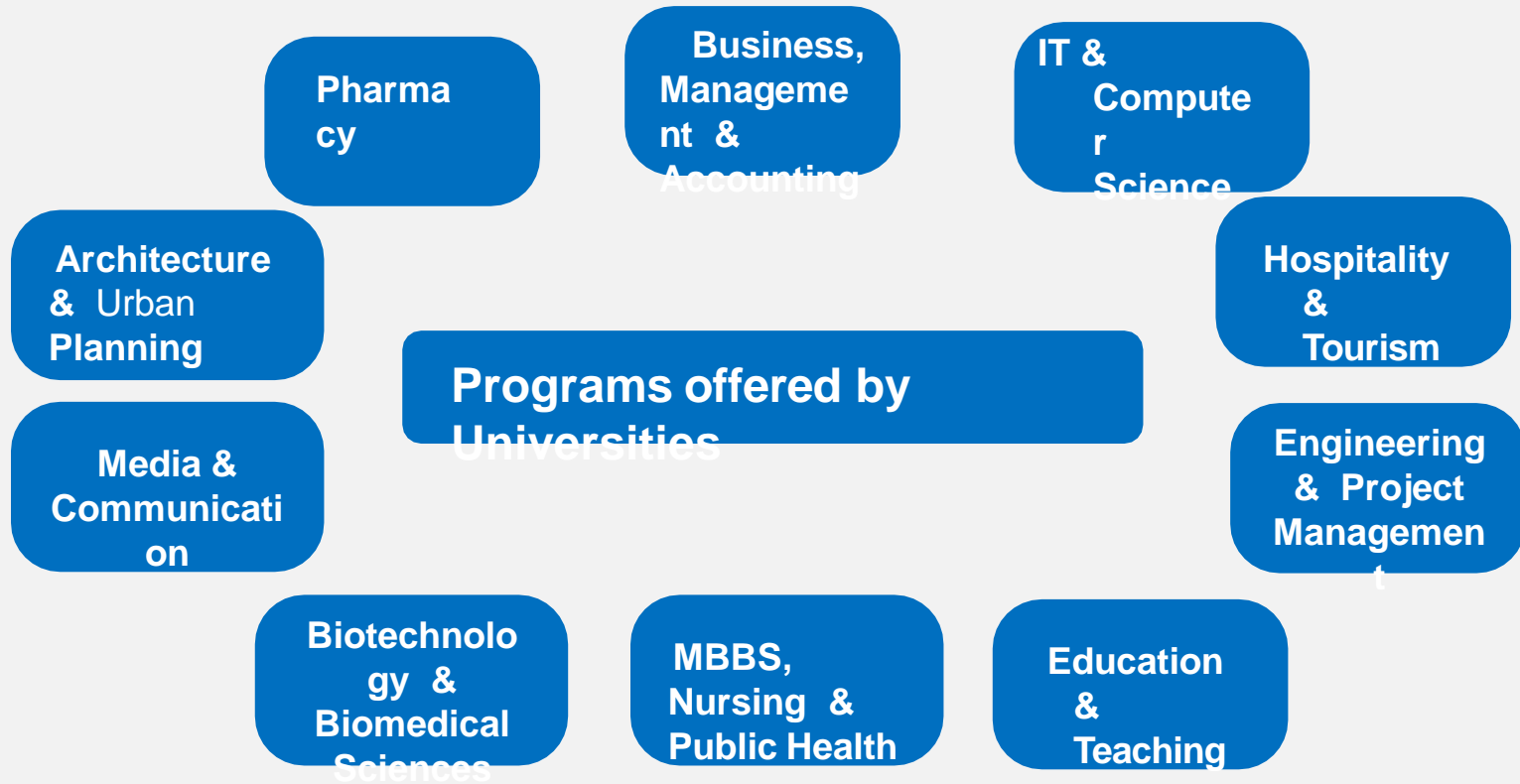
# PRIVATE COLLEGES IN AUSTRALIA

- **Colleges offering Pathway programs**
- **These Colleges offer ELICOS and Diploma leading to Degree programs**
- **e.g. Griffith College leading to Griffith University**
- **Programs are offered in almost all popular disciplines such as IT, Engineering, Health, Business, Hospitality, etc.**

# UNIVERSITIES IN AUSTRALIA

- There are a total of 43 Universities in Australia
- Public – 38 Universities
- Private – 3 Universities (Bond, Notre Damn and Torrens)
- International Universities – 2 (Carnegie Mellon and University College London)
- The Higher Education Sector in Australia primarily consists of Universities
- The top 8 universities in Australia are popularly known as Group of 8
- Australian Universities offer pathway programs, bachelor's & master's
- degrees and doctoral programs

# PROGRAMS OFFERED BY AUSTRALIAN UNIVERSITIES



# PATHWAY PROGRAMS

- ❖ Students who are not able to meet the direct entry requirements of Australian Universities can be offered 'Pathway Programs.'
- ❖ These programs can be offered at undergraduate level and postgraduate level.
- ❖ These are also called as 'Packaged Programs'.
- ❖ Pathway programs are a good opportunity to the students who fail to meet the direct entry requirements of the Australian universities.

# TYPES OF PATHWAY PROGRAMS

## Pathway Programs are of two types

### ❖ **Academic Pathway Programs**

Offered to the students not able to meet the Academic entry criteria

### ❖ **English Language Programs**

Offered to the students not able to meet the English language criteria





# ACADEMIC PATHWAY PROGRAMS

- **(Undergraduate)**
- **Students scoring 55% to 64% in HSC can be offered these programs**
- **They are also called as Diploma leading to Degree programs (D to D programs)**
- **Students usually get admission in a college where they study a Diploma Program for one year (e.g. Diploma of Business)**
- **After successful completion of Diploma, they progress to the second year of**
- **Bachelor's degree, eventually completing their graduation in 3/4 years.**

# EXPLANATION OF ACADEMIC PATHWAY PROGRAMS (UNDERGRADUATE)

Student A - 60% in HSC (Directly not eligible)



Studies Diploma of Business in a college in his 1st year

Student B - 75% in HSC (Directly eligible)



Studies Bachelor of Business in the university in his 1st year

Both of them will progress to study the second year of Bachelor of Business in the university



They graduate together eventually

# ACADEMIC PATHWAY PROGRAMS (Post-graduate)

## Some Australian universities offer pathways at postgraduate level.

- ❖ Offered to the students who fail to meet NOOSR criteria  
e.g., Second division from a Section 3 university/Pass division from a Section 2 university.
- ❖ Students are offered a qualifying program of one semester called as PQP
- ❖ Student first completes the PQP and then progresses to the master's degree
- ❖ PQPs are available only for business/management/accounting degrees  
(Exception: Griffith University offers PQP for business, engineering and IT courses)







# ENGLISH LANGUAGE PATHWAYS (ELICOS)

- English Language Pathways are also called as ELICOS, EAP, ELP, etc.
- Offered to students falling short of English language requirement
- Students have to study English 'before' commencing their main program
- Duration of ELICOS is restricted to 10 weeks
- Tuition Fee of ELICOS: AUD 300 to AUD 400 per week

# TIME SCHEDULE FOR AUSTRALIA PROCESSING

## For February intake

<b>IELTS Coaching</b>	<b>June</b>
<b>Appear for IELTS Test</b>	<b>July</b>
<b>IELTS Test Result</b>	<b>July/August</b>
<b>Submit applications to universities</b>	<b>July to October</b>
<b>Offer Letters</b>	<b>July to November</b>
<b>Arrangement of Funds</b>	<b>August to December</b>
<b>Financial Assessment in the Universities</b>	<b>September to January</b>
<b>Apply for Visas</b>	<b>October to January</b>
<b>Visa Grant</b>	<b>December to February</b>
<b>Fly to Australia</b>	<b>February</b>

# TIME SCHEDULE FOR AUSTRALIA PROCESSING

## For July intake

<b>IELTS Coaching</b>	<b>December</b>
<b>Appear for IELTS Test</b>	<b>January</b>
<b>IELTS Test Result</b>	<b>January/February</b>
<b>Submit applications to universities</b>	<b>January to April</b>
<b>Offer Letters</b>	<b>January to May</b>
<b>Arrangement of Funds</b>	<b>February to May</b>
<b>Financial Assessment in the Universities</b>	<b>March to May</b>
<b>Apply for Visas</b>	<b>May to June</b>
<b>Visa Grant</b>	<b>April to July</b>
<b>Fly to Australia</b>	<b>July</b>

# COST OF EDUCATION AND LIVING IN AUSTRALIA

<b>IELTS Exam Fee</b>	<b>Rs. 13,250</b>
<b>Tuition Fee of Universities (2 years)</b>	<b>Rs. 25,00,000</b>
<b>Living Costs</b>	<b>Rs. 12,00,000</b>
<b>Airfare from India to Australia</b>	<b>Rs. 50,000</b>
<b>Visa Fee</b>	<b>Rs. 30,000</b>
<b>Total Expenses</b>	<b>Rs. 37,93,250</b>
<b>Less Part Time Earnings</b>	<b>Rs. 15,60,000</b>
<b>Net Cost</b>	<b>Rs. 22,33,250</b>
<b>Less Scholarship Amount</b>	<b>If Applicable</b>
<b>Total Money to be spent by the student</b>	<b>Rs. 22,33,250</b>



# WHY AUSTRALIA WITH SWIS IMMIGRATION

- A good mix of universities, colleges and study centers catering to all types of students (rankings, eligibility and budget preferences)
- Consistently high visa success ratio over the last 6 years
- Experienced staff members providing end-to-end support
- Assistance for interviews and SoPs

*Thanks*

